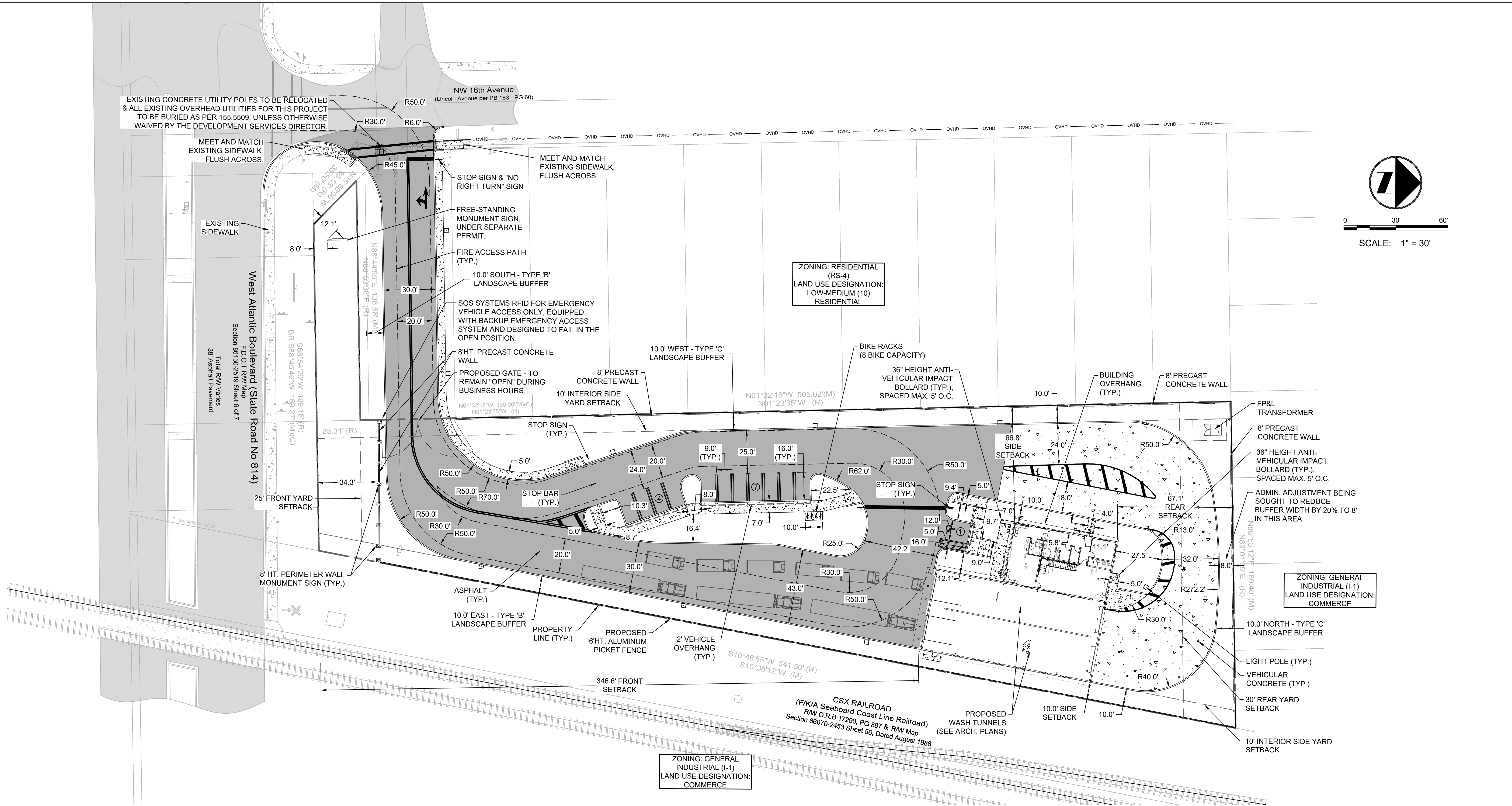


A:\2024\24-0055-001-01 1501 Atlantic Truck Wash\Drawings\24-0055-SP.dwg [SP-1] Sep 08, 2025 12:44pm NPASTRE



SITE PLAN DATA TABLE		
Site Location	1501 W. Atlantic Blvd. (Folio #484234500010)	
Net Site Area	73,343 Sq. Ft.	1.68 Acres
Existing Zoning	General Industrial (I-1)	
Proposed Use	General Industrial (I-1)	
Area Compliance		
	Square Footage	Percentage of Net Site
Total Pervious Area (min. 20%)	25,927 SF	35.4%
Total Impervious Area	47,416 SF	64.6%
	Required	Provided
Lot Coverage (Building Coverage - 65% Max.)	47,673 SF Max.	7,188 SF (includes front porch covered area)
Lot Area (10,000 sf Min.)	10,000 SF Min.	73,343 SF
Building Data		
	Required	Provided
Maximum Height	45' Max.	20.5'

Setback Data		
Front Setback (South)	Required	Provided
Rear Setback (North)	Required	Provided
Interior Side Setback (East)	Required	Provided
Interior Side Setback (West)	Required	Provided
Parking Data		
	Required	Provided
Car Wash/Auto Detailing:		
1 space per 500 sf (6,747 sf)	14	14
*Admin. Adjustment 20% Reduction (14 x 0.8 = 12)	12	12
Total Parking Spaces Required:	12	12 (includes 1 accessible sp.)
Bicycle Parking		
	Required	Provided
4 bicycles for each 10 parking spaces	6	8
NOTE:		
1. NO TRUCKS OR FLEET VEHICLES WILL BE ALLOWED TO IDLE OR REMAIN OVERNIGHT.		
2. UNDERGROUND UTILITY LINES SHALL BE ROUTED AROUND THE TREE PROTECTION AREA WHERE POSSIBLE. IF THIS IS NOT POSSIBLE, A TUNNEL MADE BY A POWER-DRIVEN SOIL AUGER MAY BE USED UNDER THE TREE (AS PER 155.5204.F.3.D).		



MANUFACTURER:	ATLANTIC COAST PRECAST
MATERIAL:	CONCRETE
FINISH:	SMOOTH DESIGN
COLOR:	ASH GREY, OR COLOR TO MATCH ARCHITECTURE. SEE ARCHITECTURE PLANS FOR COLOR SELECTION
HEIGHT:	8'-0"
URL:	https://atlanticcoastprecast.com

1 PRECAST FENCE

DETAIL

NTS

AAC

PZ24 12000026

08.20.2025

DATE:	02/26/25
SCALE:	AS SHOWN
DESIGN BY:	AKR
DRAWN BY:	AKR
CHECKED BY:	NDP
APPROVED BY:	SWP

CRAVEN · THOMPSON AND ASSOCIATES, INC.
ENGINEERS · PLANNERS · SURVEYORS
35653 N.W. 53RD STREET, FORT LAUDERDALE, FLORIDA 33309
TEL: (954) 739-6409
FAX: (954) 739-6409
FLORIDA LICENSED ENGINEERS, SURVEYORS & MAPPING BUSINESS NO. 271
FLORIDA LICENSED LANDSCAPE ARCHITECTURE BUSINESS NO. C00014

MATERIAL SHOWN HEREIN IS THE PROPERTY OF CRAVEN THOMPSON & ASSOCIATES, INC. AND SHALL NOT BE REPRODUCED OR TRANSMITTED IN ANY FORM OR BY ANY MEANS, ELECTRONIC OR MECHANICAL, INCLUDING PHOTOCOPYING, RECORDING, OR BY ANY INFORMATION STORAGE AND RETRIEVAL SYSTEM, WITHOUT WRITTEN PERMISSION OF CRAVEN THOMPSON & ASSOCIATES, INC. © 2015

ATLANTIC FLEET WASH
1501 WEST ATLANTIC BLVD.
POMPAÑO BEACH, FLORIDA

PREPARED FOR:
KAJA PROPERTIES INC.

SITE PLAN

Nicole D. Pastre
Florida R.L.A. No. 6667397
2025-09-08

PROJECT NO.
24-0055-001-01

SP-1
SHEET ____ OF ____